



**FPL**<sup>®</sup>



## Changing the Way Davie Looks at Night

### FPL LT-1 LED Lighting Tariff

Alex Acosta, Sr. Consultant  
FPL LED Lighting Solutions



## OUR HISTORY RUNS DEEP

---

# FOUNDED IN FLORIDA

### **The Founding Company – Florida Power & Light Company (FPL)**

- Began in the final days of 1925
- Joined the New York Stock Exchange in 1950
- Largest electric utility in Florida
- A leading Florida employer (approximately 8,900 employees)

### **The Next Era Begins**

- In 2010, FPL's parent company (FPL Group) was renamed NextEra Energy, a forward-looking enterprise that sees the future and gets there first
- Headquartered in Juno Beach, Florida
- Ranked the top “green utility” in the United States in 2015 and 2016



## OUR HISTORY RUNS DEEP

---

# PIONEERS OF POWER

### **FPL**

- Serves nearly 5 million accounts or more than 10 million people across nearly half of the state of Florida
- Residential and business rates among the lowest in the state and the nation
- One of the cleanest power plant fleets among all utilities nationwide

### **NextEra**

- Operations in 30 states and Canada
- Largest generator of renewable energy in the world
- Capacity 45.9 GW



## OUR HISTORY RUNS DEEP

---

# LEADERS IN LIGHT

### FPL

- Providing street light services for more than 60 years
- Currently providing street light services for more than 500K owned and maintained street lights
- Services/replaces approximately 150K lights per year
  - Automobile accidents
  - Hurricanes
  - Routine maintenance
- Through smart grid technology, FPL owned street lights are now equipped with “Smart Nodes” that can auto-generate trouble tickets

# NEW LT-1 TARIFF

**Approved by the PSC on April 28, 2017, this tariff provides for the installation of FPL owned LED lights at no upfront cost to customers\*.**

- The Tariff allows us to offer a variety of LED street and area light solutions in a variety of different scenarios:
  - Convert HPS lights currently under SL-1
  - Convert customer owned and maintained lights to LED
  - Install new LED street and area lights
- Monthly fixture, maintenance, and energy charges are determined based on the fixture chosen by the customer
- Customers may pay additional monthly charges for dedicated light poles, underground construction and conversions

*\* In cases where directional boring or other uncommon construction concerns exist, an upfront fee may be required*



## Proliferation of LED

---

LEDs are in our cars, our offices, our homes and even our pockets



### SOME OF THE US CITIES CONVERTING

- Los Angeles, CA
- Las Vegas, NV
- Boston, MA
- New York City, NY
- West Palm Beach
- Detroit, MI
- San Francisco, CA
- Cleveland, OH
- St. Louis, MO
- Portland, OR
- Orlando, FL
- Asheville, NC
- Raleigh, NC
- Oahu, HI
- Pittsburg, PA
- Pueblo, CO
- Austin, TX
- San Antonio, TX
- Seattle, WA
- Salt Lake City, UT
- Phoenix, AZ
- Anchorage, AK
- Topeka, KS
- Des Moines, IA
- Chattanooga, TN
- Canton, OH
- Mobile, AL
- Tampa, FL
- Chicago, IL
- Providence, RI

# DEMAND IS HIGH FOR LED STREET LIGHTS UNDER LT-1

More than 30 cities have already signed up to do citywide conversions



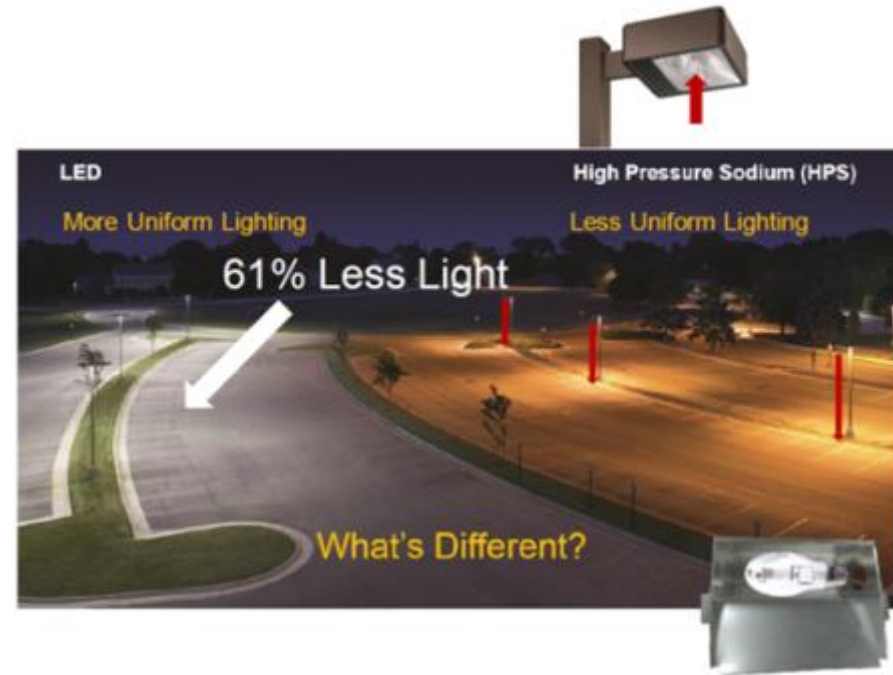


## LED ADVANTAGES

# BENEFITS OF LED

### LEDs offer:

- Superior color rendition and differentiation
  - High color rendering index (CRI)
  - More natural colors than HPS
- High efficiency
  - Energy savings up to 50%+
- Greater variety of choices



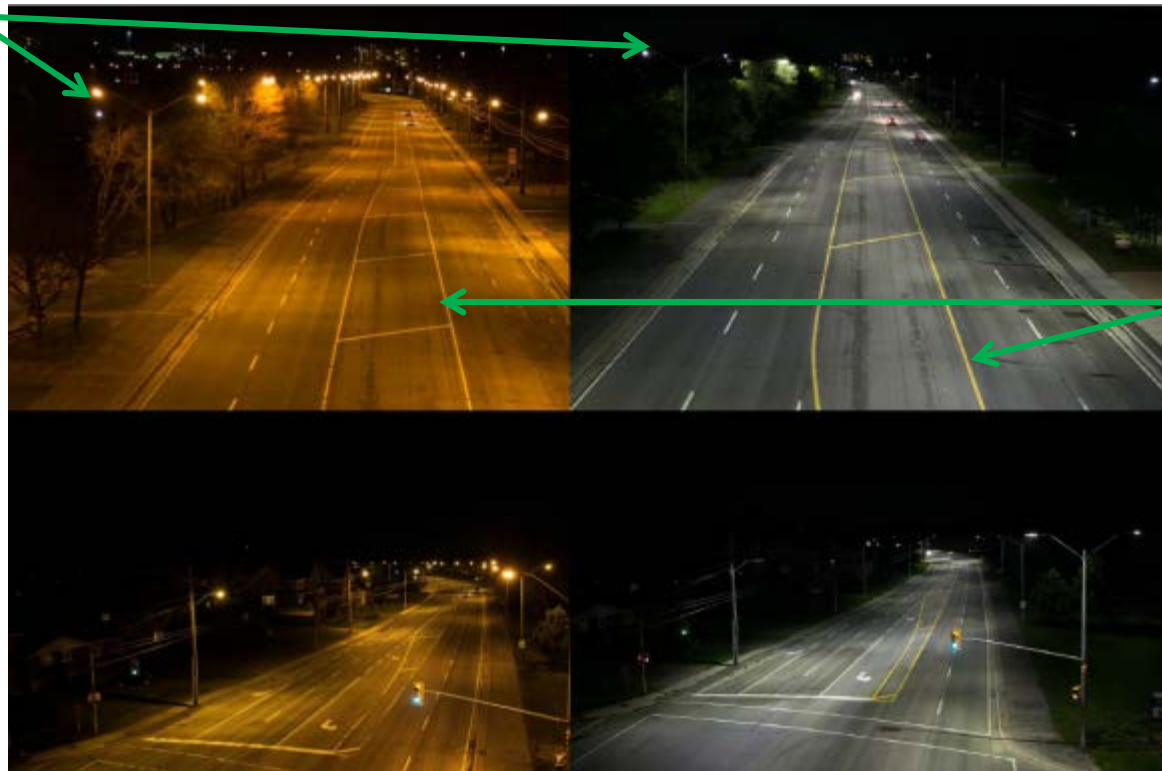
*Comparison of LED fixtures (left) versus High Pressure Sodium (HPS) fixtures (right)*

Image from <http://www.myLEDlighting guide.com>

# LED ADVANTAGES

## WHY CHOOSE LED OVER HPS?

Compare **uplight** component from HPS lights vs. LED



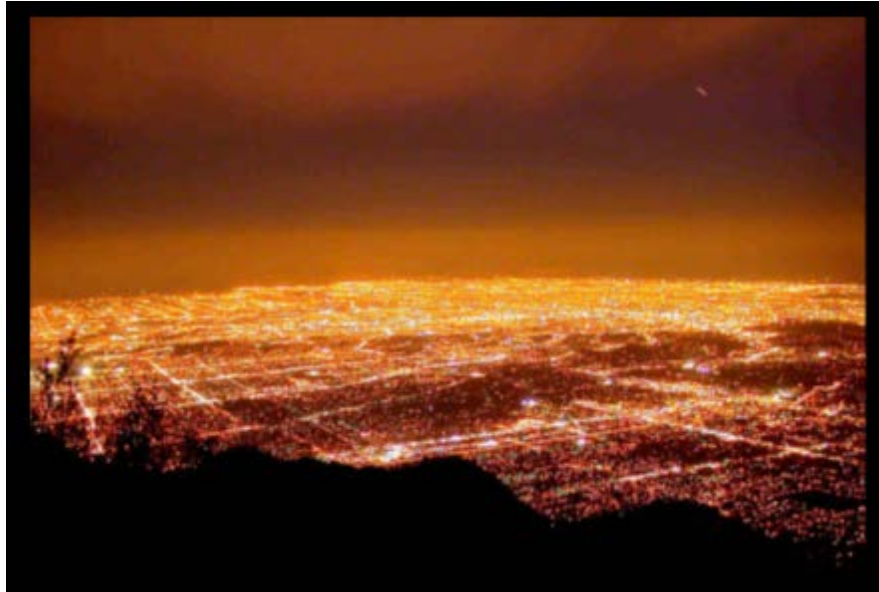
Compare **color rendering** from HPS lights vs. LED on the stripe colors



## LED ADVANTAGES

---

# CITY OF LOS ANGELES





# LIGHTING CHOICES

---

## Color Temperature



Existing 2200 Kelvin HPS



3000 Kelvin



4000 Kelvin

# Town's Carbon Footprint and Monthly Lighting Bill Will Be Reduced

## Going Green

This plan reduces power consumption by: 929,988 kWh / year  
 and that eliminates: 654 metric tons of CO<sub>2</sub> every year<sup>1</sup>  
 or removing: 139 cars from the road<sup>2</sup>

<b>Roadway</b>		<b>Existing</b>		<b>Selection</b>	
<b>TOTAL</b>	<b>2353</b>		<b>\$ 24,221.41</b>	<b>\$</b>	<b>21,723.20</b>

## Going Green

This plan reduces power consumption by: 141,624 kWh / year  
 and that eliminates: 100 metric tons of CO<sub>2</sub> every year<sup>1</sup>  
 or removing: 21 cars from the road<sup>2</sup>

<b>Post Top</b>		<b>Existing</b>		<b>Selection</b>	
<b>TOTAL</b>	<b>613</b>		<b>\$ 5,041.91</b>	<b>\$</b>	<b>5,131.65</b>

**Total Annual Savings of more than \$28,000**

Thank you for your time.

